



Manufacturing :

Blastroom & Paint Booth System,
Shot Blasting Machines,
Spares & Service.



**PRAKRUTI
ENTERPRISE**
Shot Blasting Solution

● GET IN TOUCH ●



13, Madhumilan Estate, Near Madhur Masala,
Phase-1, GIDC Naroda, Ahmedabad-382330.



prakrutienterprise812@gmail.com



+91-9723420246



www.prakrutienterprise.com



9:00am - 6:00pm
Sunday Closed



About Us

We are among the finest in Industry of Shot Blasting & shot Peening Machine, Blast Room System, Paint Booth & Baking Oven Systems Manufacturers in India .

The Company has commenced production of Shot Blasting & shot Peening Machines in the year 2012. Our Manufacturing Facilities consisting of one Workshop having 3000 sq.ft. covered area and is devoted for Assembly & testing of Equipments. The Second Workshop is having covered area of 2000 sq.ft. is equipped with Rolling Machine, Welding machine, Automatic Radial/Drilling & Taping Machine, Bending Machine, Plasma Cutting machine, shearing Machine etc.

Mr. Ketan Brahmabhatt is Managing Director of this Company is having 15 years of rich experience in this line.



ABOUT US

We are among the finest in Industry of Shot Blasting & shot Peening Machine, Blast Room System, Paint Booth & Baking Oven Systems Manufacturers in India . The Company has commenced production of Shot Blasting & shot Peening Machines in the year 2012. Our Manufacturing Facilities consisting of one Workshop having 3000 sq.ft. covered area and is devoted for Assembly & testing of Equipments. The Second Workshop is having covered area of 2000 sq.ft. is equipped with Rolling Machine, Welding machine, Automatic Radial/Drilling & Taping Machine, Bending Machine, Plasma Cutting machine, shearing Machine etc. Mr. Ketan Brahmabhatt is Managing Director of this Company is having 15 years of rich experience in this line. The Sales Outlets are located in Mumbai, Indore, Hyderabad , Bangalore, & Delhi. Quality Control Department is equipped with all necessary Latest Instruments.

The Company have robust After Sales Services Facility & Net Work. It has trained and experienced Technicians to look after the Service Calls. Huge inventory of Spare Parts is maintained so that these are made available Ready Stock. PE Products are eco-friendly and provide the optimum economic solutions. PE is having highly qualified and experienced machine design team using latest 3D software's for designing of machines. The Company has a policy of continuous improvement on quality of the machine and strives for consumerism. The Company manufactures Standard Shot Peening Machine as well as customized Shot Blasting & Peening Machines.

We are market leader in Mfg Of *Ni-hard,Hi-crome castings* for Airless Shot Blasting Spares (Blade set,Impeller,control cage ,Centering plate,Cage Adaptor plate,Lines,Ni-Hard Tiles, Grill,etc) .We have a range of quality product for shot blasting, etching, deburring,descaling & shot peening applications

"PRAKRUTI ENTERPRISE" has been manufacturing Bare wheel, Dust Bags, Screw conveyor and relating items in-house . Our products are known for their robust construction, high efficiency and reliability of operation.we give our best Quality assurance for our customers satisfaction



**PRAKRUTI
ENTERPRISE**
Shot Blasting Solution

PRODUCTS

Air Operated Shot Blasting PORTABLE ABRASSIVE BLASTER

PORTABLE ABRASSIVE BLASTER



Since inception, we are dedicatedly indulged in offering a best quality gamut of G7-300 Portable Abrasive Blaster to the esteemed patrons. The offered range is equipped with hydraulically tested pressure vessels and a nozzle lined with tungsten carbide for assuring their superior performance and longer service life. These G7-300 portable abrasive blasters are very light in weight and operates on the pressure feed system which results in optimum cleaning rate.

Features :

- + Pressure vessel manufactured as per IS No. 2825
- + Construction of machine is rugged, sturdy and mounted on heavy duty rubber wheels.
- + Leakage proof forged quality fittings used.
- + Abrasive metering valve is robust in design & give precise control on abrasive to air ratio.
- + Sand Blasting hose conform to IS No. 446
- + Pop-up valve coated with tungsten carbide layer to longivate life
- + Ready availabilities of spare parts & commissioning facility.





**PRAKRUTI
ENTERPRISE**
Shot Blasting Solution

PRODUCTS

Air Operated Shot Blasting PRESSURE BLASTING MACHINE



PRESSURE BLASTING MACHINE

Pressure blaster works on the direct pressure principle of blasting. A pressure blaster machine directly bolted below hopper of cabinet has automatic abrasive refilling arrangement. Our Pressure Blaster Machine are available with below mentioned features and models.

Features :

- + Durable
- + High performance
- + Corrosion Resistant
- + Abrasion Resistant
- + Less Maintenance

Models Available:

- + PB 6060
- + PB 9182
- + PB 12090
- + PB 150120

Product Details :

Minimum Order Quantity	First
Frequency	50
Brand	Prakruti Enterprise
Material	Mild Steel or Stainless Steel
Production Capacity	100
Automation Grade	FULLY
Pressure	Direct
Phase	3
Surface Finishing	SA 2.5
Motor Speed	2800



**PRAKRUTI
ENTERPRISE**
Shot Blasting Solution

PRODUCTS

Air Operated Shot Blasting SUCTION BLASTING MACHINE



Suction Blasting Machine

We are manufacturing precisely engineered Suction blaster for effective cleaning of various metals and alloys. Our Suction Blaster machine (Super Blaster or Suction Blaster) are manufactured in line with the latest technology, these cabinet blasters ensure continuous and uniform finishing and cleaning via automatic abrasive unit.

Features :

- + Durable
- + High performance
- + Corrosion Resistant
- + Abrasion Resistant
- + Less Maintenance

Models Available:

- + SB 6060
- + SB 9182
- + SB 12090
- + SB 150120

Product Details :

Model	SB 91/82
Working Chamber Size	
Height	775
Width	910
Door Opening	
Width	730
Height	675



**PRAKRUTI
ENTERPRISE**
Shot Blasting Solution

PRODUCTS

Airless Shot Blasting Machine

DIABOLA TYPE ROD CLEANING MACHINE

DIABOLA TYPE ROD CLEANING MACHINE



SURFEX introduced low cost Shot Blasting Machine for cleaning of Rods/Bars. The use of this machine is recommended for replacing acid pickling process which is environmentally hazardous hence banned by Central Pollution Control Board (CPCB) of India. The Machine is provided with single Blast Wheel Station mounted on Blast Cabinet. The Dia-Bola type of conveyor system is provided for rotating as well as moving forward the Rods/Bars. The Rods are fed on dia-bola which convey the same into Blast Chamber, there it is shot blast/cleaned. The blast / cleaned Rods come out from outlet side of blast cabinet. The machine is continuously operating single rod process system. The production rate upto 4 to 5 per meter per minute can be achieved. The machine can also be provided for feeding 2 rods at a time, hence output is doubled. The machine is equipped with effective shots recovery & cleaning system and dust collector conform to Central Pollution Control Board (CPCB) norms. The entire operation of machine is controlled by control panel.

PRODUCTS

Airless Shot Blasting Machine

HANGER TYPE SHOT BLASTING MACHINES



HANGER TYPE SHOT BLASTING MACHINES

HANGER TYPE SHOT BLASTING MACHINE Where component will be hanged and can be rotated, the Hanger Type Machine is advised. In this machine hanger are mounted on the doors of the machine. For the blasting operation the door of the machine is opened and components are loaded on to the hanger. Then the door is closed and the blast wheel unit is operated. Two Nos. of blast wheel stations are located strategically around the cabinet fires abrasives on rotating components. The components are shot blasted homogeneously all around on the rotating hanger and blast clean the components. After the blast cleaning cycle is over, the blast wheel is shut off and door is opened for unloading of components.

Y HANGER TYPE SHOT BLASTING MACHINES

Our valued clients can avail the offered products in both customized and standard forms as per their requirement.

Product Details :

Model	SB 91/82
Working Chamber Size	
Height	775
Width	910
Door Opening	
Width	730
Height	675





**PRAKRUTI
ENTERPRISE**
Shot Blasting Solution

PRODUCTS

Airless Shot Blasting Machine

ROLLER CONVEYOR / TUNNEL TYPE SHOT BLASTING MACHINE

ROLLER CONVEYOR TYPE PLATE CLEANING MACHINE



The Plate Cleaning Machine consist of 6/10/12 Blast Wheel Station driven by suitable Electric Motor. The job is kept on Roller Conveyor System which is having variable speed flexibility. The job enters into Blast Cabinet for cleaning purpose. Shot Blasted job come out on outside Roller Conveyor for unloading purpose. This machine can be modified to make it suitable for blast cleaning of Angle Channel, Joist etc. The Machine consist of Blast Wheels, Blast Chamber, Elevator, Abrasive Cleaning System, Rotary Screen Separator. Dust Collector High Speed Blower, Brush Cleaning System, Roller Conveyor System & Electrical Control Panel.

LPG/CNG/GAS CYLINDER CLEANING MACHINE

Shot Blasting Machine for LPG Cylinder is simple to operate with minimum maintenance and operator has to load and unloaded the cylinders on rotating diabolic rollers. The external surface of metallic LPG cylinders are required to be blast cleaned to remove rust, corrosion and prepare the surface for thermal coating and painting Machine is available in different capacity to suite customer requirements. Surfex Airless Shot Blasting Machine for LPG Cylinders with Dia Bola Roller, Blast Cabinet, two numbers of blast wheel Unit Assembly, Bucket Elevator, Abrasive Cleaning System, Dry Dust Collector Unit, Control Panel & electric Motors. Generally as per enclosed Specification Sheet No. Surfex/02 and literature.



PRODUCTS

Airless Shot Blasting Machine

ROLLER CONVEYOR / TUNNEL TYPE SHOT BLASTING MACHINE

ROLLER CONVEYOR HEAVY STRUCTURE CLEANING MACHINE



The heavy structures like fabricated joist can be shot blasted in Special Purpose Machine developed for this application. The Machine consists of Horizontal Heavy Duty Roller Conveyor System, Blast Cabinet, Multiple Blast Wheel Station driven by Electrical Motors, Elevator System, Abrasive Cleaning System, Rotary Screen Separator, Electrical and Control Panel, Dust Collector System etc.

The job is kept on inward conveyor which is automatically transferred into Blast Chamber through Inlet Vestibules. In the Shot Blasting Chamber Multiple Wheels are located which fire abrasive on moving job and clean it thoroughly from all sides in Single Pass. The shot blasted job comes on Outlet Conveyor System for unloading purpose.

PRODUCTS

Airless Shot Blasting Machine

ROTARY BARREL TYPE SHOT BLASTING MACHINE



ROTARY BARREL TYPE SHOT BLASTING MACHINE

We are engaged in offering a remarkable range of Shot Blasting Machine Rotary Barrel Type or Rotary Barrel Type Shot Blasting Machine. These machines are precisely engineered by the experts and are equipped with electronic timer and control panels. Rotary barrel type shot blasting machines the smallest version of batch cleaning machine and has very low power consumption. Owing to their technical superiority and excellent performance, these Shot Blasting Machine Rotary Barrel Type are widely used in small job shops, forging & foundries and dye-casting unit.

Product Details :

Brand	First
Automatic Grade	50
Machine Type	Prakruti Enterprise
Number of Doors	Mild Steel or Stainless Steel
Capacity	100

PRODUCTS

Airless Shot Blasting Machine

SWING TABLE SHOT BLASTING MACHINE



SWING TABLE SHOT BLASTING MACHINE 900 SBM

The range of Surfex Swing Table Type Machine is made in such a way that it suits to small to big foundries. These machines can be supplied in one/two doors with table. The operation of machine is simple & operator friendly. The dimension of table is 750/900 mm dia. It can accommodate job size of height 300/400mm & the total weight carrying capacity of the table is 350/400 kg.



SWING TABLE SHOT BLASTING MACHINE 1200/1800 SBM

The range of Surfex Swing Table Type Machine is made in such a way that it suits to small to big foundries. These machines can be supplied in one/two doors with table. The operation of machine is simple & operator friendly. The dimension of table is 1200/1800 mm dia. It can accommodate job size of height 600/1000mm & the total weight carrying capacity of the table is 750/2500 kg.



**PRAKRUTI
ENTERPRISE**
Shot Blasting Solution

PRODUCTS

Airless Shot Blasting Machine

TUM BLAST TYPE SHOT BLASTING MACHINE



TUM BLAST TYPE SHOT BLASTING MACHINE

We are counted among the most prominent manufacturers of an impeccable spectrum of Tumblast Shot Blasting Machine.

Tumble Blaster Machines are suitable for blasting components of very small surface area and which can be tumbled.

Product Details :

Description	Model TB-51x69-SPL	Model TB-69x92-SPL
No. of Rotor (Blast Wheel)	1 No.	1 No.
Size of Rotor (Blast Wheel)	12 ^{1/2} " X 2 ^{1/2} " (DDS)	30RLM165 16 ^{1/2} " x 3"
No. of Rotor Blade	8	8
H.P. of Rotor	7.5	15
RPM of Rotor	2800	2600
Shot Velocity (Meter/ Sec.)	60-70	70-80
Shot Flow Rate (Kg./hour)	6500	12000
Initial Fill requirement of Shots (To be provided by Purchaser)	300 Kg.	600 Kg.
Basket (Tumbler) Size	51cm x 69cm (20" x 27")	69cm x 92cm (27" x 36")
Weight Carrying Capacity of Basket	140 Kg.	300 Kg.
Volume	2 CFT	5 CFT



**PRAKRUTI
ENTERPRISE**
Shot Blasting Solution

PRODUCTS

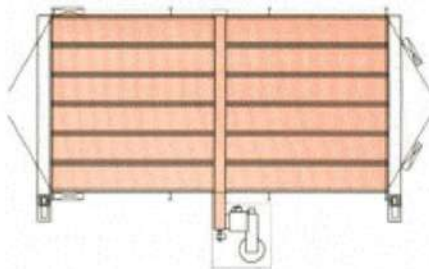
Blast Room System

FULL FLOOR SCREW AUTOMATIC RECOVERY



FULL FLOOR SCREW AUTOMATIC RECOVERY

The full floor reclaim system utilizes multiple screw assy to create a fully automatic abrasive reclaim system, where 100% of the blast media is returned to the separator system during the blasting operation. The full floor reclaim design requires that the material handling of the work piece be intricately designed into the configuration of the room. The full floor reclaim design can be used with any room configuration. This system is best suited for high production requirement.





**PRAKRUTI
ENTERPRISE**
Shot Blasting Solution

PRODUCTS

Blast Room System

RECESS HOPPER TYPE

RECESS HOPPER TYPE



Technical Specifications

Equipment : Blast Room System, Size 5 Mtr. (L) x 3.5 Mtr. (W) x 3 Mtr. (H),
MS Fabricated Blast Room Enclosure : MS fabricated blast room enclosure of size 5 Mtr. (L) x 3.5 Mtr. (W) x 3 Mtr. (H) in bolted construction for strength and rigidity. Sheet metal panels shall be fabricated and bolted together to form dust seal joints. Panels will be supported with MS channels at stages, for support and rigidity. End ties are bolted in support of angle frame. The complete structure is adequately designed with necessary foundation layout for strength.

1. Blast Room Door, with Intake Air Louvers : Sheet metal fabricated blast room doors are made in 2 leaves. The Door frame is made of rigid MS channel section, fitted with proper thrust bearing hinges. Door leaves are provided with adequately designed fresh air intake louvers. The inside of doors shall be rubber lined to protect against abrasion. The door leaves are provided with door locking system and vision glass to view inside of blast room.

2. Rubber Lining on Blast Room Inside Walls : The inside walls of blast room and doors shall be protected against abrasion by 3 mm thick abrasive resistant hanging rubber sheets of size 1.2 M (W) x 3.0 M(L). MS fabricated strips shall be supplied with each rubber sheet to hang it on the room walls. These rubber sheets are having good resistance against abrasive media and protects the metallic enclosure of the Blast room. Rubber protection will be provided on side walls and doors by pasting Rubber sheet on the same.

3. Blast Room Flooring and Grating : Suitable hopper grating for Recess hopper is provided to facilitate transfer of used abrasive into recessed hopper. Suitable support on hopper will be provided for strength and rigidity.

Load capacity of grating : 400 kg /sq. mtrs. (The load should be U.D.L.)

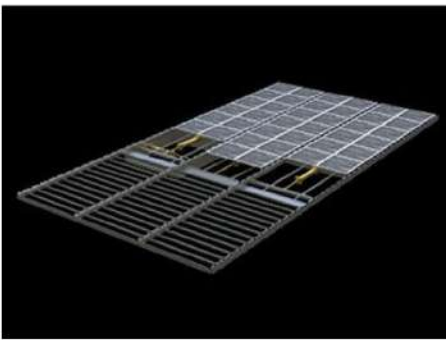


**PRAKRUTI
ENTERPRISE**
Shot Blasting Solution

PRODUCTS

Blast Room System

SCRAPER TYPE RECOVERY SYSTEM



SCRAPER TYPE RECOVERY SYSTEM

Scraper recovery Floor & Grating on Floor : (sketchmatic diagram enclosed) Surface's exclusive Scraper (Flat-Track) system, the newest type of recovery floor, uses pneumatic power and a ladder like arrangement of steel frame to move the blast media. This scraper floor has many features that separate it from those offered by our competitors i.e. this system does away the problem of jamming of metallic vanes. The scrapers comprise of a natural rubber flap set against a steel comb, multiples of which are set in 10' long frames.

This assembly is then adjoined to others to form a corridor running the length of the blast booth. Available in standard widths, each corridor moves in a reciprocating back and forth motion. Because the distance between the scrapers is less than the distance of travel, each scraper moves abrasive forward, as the rubber flap in this direction is locked against the steel comb behind it, to the next (A) in a shunting motion.

On the reverse stroke the rubber scraper blade, unhindered in this direction by the steel comb, is free to pass over the previous scrapers deposit of abrasive (B). The abrasive is pushed forward to a final corridor positioned at right angles to the booth where it conveys the abrasive to an elevator and is recycled. The depth of the recovery channel is only 5" ensuring that in many instances, ie. Those where objects being taken into the booth may be carried by hand, it can be located directly onto an existing factory floor. When a flush finish is required between the factory floor and the blast room, only minor excavation is required.

Developed initially for the steel grit and shot, the scraper works well most blast media. Its key advantages include a low profile, requiring little or no excavation, low purchase and installation costs.

The scraper floor requires less maintenance than other mechanical floors which contributes to its greater operational economy. Additionally, the scraper takes less time to install than other mechanical systems. The feature helps cut down on lost production time when the scraper is installed as a replacement system in an existing enclosure.

The scraper system is covered by a pedestrian grating on which the operator stands and through which the abrasive falls. In certain applications when heavy items are being processed, this grating can be increased in strength to provide greater loading capacities. An alternative method of supporting a heavier item is to incorporate rails into the floor, positioned conveniently between the recovery corridors on which a cart can be mounted.



**PRAKRUTI
ENTERPRISE**
Shot Blasting Solution

PRODUCTS

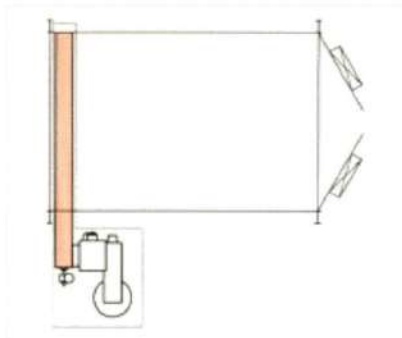
Blast Room System

SINGLE SCREW TYPE MEDIA RECOVERY TYPE BLAST ROOM SYSTEM

SINGLE SCREW TYPE MEDIA RECOVERY TYPE BLAST ROOM SYSTEM



This is the most economical floor design available. The system contains the major components found in all Prakruti Enterprise Blast Room Equipment Reclaim Systems, including metering shed plates, heavy-duty screw, belt & bucket elevator, air-wash separator, perforated plate rotary drum separator and oversized abrasive storage hopper with a caged man ladder & handrail. This is a basic "automatic reclaim package that can be expanded to an "H", "U" or Full Floor reclaim system. It is best suited for low to medium productive levels.





**PRAKRUTI
ENTERPRISE**
Shot Blasting Solution

PRODUCTS

Paint Booth System

AUTOMOBILE PAINT BOOTH

AUTOMOBILE PAINT BOOTH





**PRAKRUTI
ENTERPRISE**
Shot Blasting Solution

PRODUCTS

Paint Booth System

SIDE DOWNDRAFT PAINT BOOTH

SIDE DOWNDRAFT PAINT BOOTH



The Semi down draft type paint spray booth is suitable for any type of Air-less and Electrostatic painting. The system consists of painting booth enclosure, air intake filter, Filter channels for paint trap, air exhaust system, complete with electric motor, outlet duct, canopy etc. The fresh air enters into the system from the top of the booth passing through 2 stage filters. This allows air to flow vertically downward thereby washing the operator and the job for better visibility to the operator. Simultaneously the exhaust air system sucks the suspended paint particles and fumes from the booth. These suspended paint particles gets trapped in the filter channels which are provided on the bottom side of the wall.

Features :

- + The offered product maintains dust level to least
- + It prevents spreading of paint
- + Eliminates fire hazard

Product Details :

Substrate	Steel
Material to be painted	Steel
Voltage	380V50Hz3pH for Motors, 220V50Hz1pH for Lights



**PRAKRUTI
ENTERPRISE**
Shot Blasting Solution

PRODUCTS

Paint Booth System

WATER CURTAIN TYPE PAINT BOOTH

WATER CURTAIN TYPE PAINT BOOTH



We are offering our clients with the best-in-class gamut of Water Curtain Type Paint Spray Booth. These Water Curtain Type Paint Spray Booth are fabricated by making use of supreme quality required basic material procured from the accredited vendors of the industry. Furthermore, products that we offer satisfy illustrated quality parameters of the industry, signifying their high standards. To meet divergent demands of the clients, we are offering Water Curtain Type Paint Booth in different specifications. Paint Spray Booth is suitable for conventional airless & electrostatic painting, also paint spray booth provides better painting results.



**PRAKRUTI
ENTERPRISE**
Shot Blasting Solution

PRODUCTS

Abrasive Media



ALUMINUM OXIDE



COPPER SLAG GRIT



GLASS BEADS IMPORTED



STAINLESS STEEL SHOT



STEEL SHOT & GRIT IMPORTED



**PRAKRUTI
ENTERPRISE**
Shot Blasting Solution

PRODUCTS

Spares

AIRLESS SHOT BLASTING SPARES



BARE WHEEL



BLADESET



DUST COLLECTOR FAN



BUCKET ELEVATOR PULLEY



**CARTRIDGE PLATED TYPE
DUST COLLECTOR BAG**



**CARTRIDGE SYNTHETIC
TYPE DUST BAG**



CENTERING PLATE



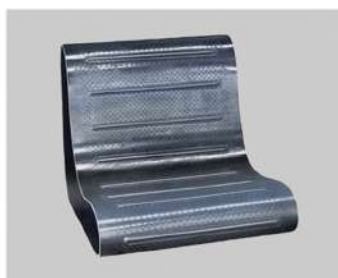
CONTROL CAGE



DUST COLLECTOR FAN



ELEVATOR BELT ASSEMBLY



**ENDLESS CONVEYOR SHOT
BLASTING BELT**



**FABRIC WOODEN TYPE DUST
COLLECTOR BAGS**



**PRAKRUTI
ENTERPRISE**
Shot Blasting Solution

PRODUCTS

Spares

AIRLESS SHOT BLASTING SPARES



FEED SPOUT



MANGANESE TILE



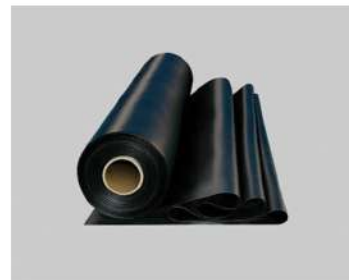
NI-HARD SIDE LINERS LH-RH



ROTARY SCREEN SAPERATOR



SCREW CONVEYOR



**SHOT BLASTING NATURAL
& PLY RUBBER SHEET**



**SYNTHETIC WOOVEN DUST
COLLECTOR BAG**



WHEEL HUB



OTHERS



**PRAKRUTI
ENTERPRISE**
Shot Blasting Solution

PRODUCTS

Spares

AIR-OPERATED BLASTING MACHINES SPARES



BLASTING HELMET



BLASTING HOSE PIPE



BLASTING SUIT



CYCLONE DROP BOX



DEADMAN HANDLE



**EXHAUST VALVE WITH
SILENCER**



GUM BOOT



HELMET AIR BREATHER



LED LIGHT - 100 WATT 400 LUX



MIXING TUBE ASSEMBLY



MUSHROOM VALVE



PB STEEL CROSS



**PRAKRUTI
ENTERPRISE**
Shot Blasting Solution

PRODUCTS

Spares

APPLICATION BEFORE & AFTER BLASTING



Application Before & After Blasting



Application Before & After Blasting



Application Before & After Blasting



Application Before & After Blasting



Application Before & After Blasting

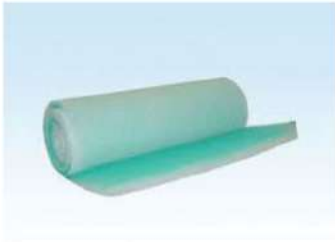


**PRAKRUTI
ENTERPRISE**
Shot Blasting Solution

PRODUCTS

Spares

PAINT BOOTH SPARES



PAINT BOOTH FILTERS



PAINT BOOTH PAPER FILTERS



PAINT BOOTH PAPER FILTERS



PAINT BOOTH PAPER FILTERS



PAINT BOOTH PAPER FILTERS

GALLERY





**PRAKRUTI
ENTERPRISE**
Shot Blasting Solution

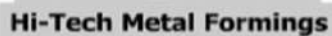
GALLERY





**PRAKRUTI
ENTERPRISE**
Shot Blasting Solution

CLIENTS LIST





**PRAKRUTI
ENTERPRISE**
Shot Blasting Solution

CONTACT US



13, Madhumilan Estate, Near Madhur Masala,
Phase-1, GIDC Naroda, Ahmedabad-382330.



+91-9723420246



prakrutienterprise812@gmail.com



9:00am - 6:00pm (Sunday Closed)



www.prakrutienterprise.com

